

*Yarraville*  
COMMUNITY  
CENTRE

# ANNUAL REPORT

Yarraville Community Centre 2025



## ACKNOWLEDGEMENT OF COUNTRY

Yarraville Community Centre acknowledges the Traditional Owners of the land, the Wurundjeri Woi Wurrung and Boon Wurrung peoples of the Kulin Nation, on which the centre is located. We pay our respects to Elders past and present.

59 FRANCIS STREET  
YCC.NET.AU

# TABLE OF CONTENTS

About Yarraville Community Centre	4
Strategic Direction	5
Core Values	5
CEO's Report	6
Chair's Report	7
Treasurer's Report	8
Financial Reports	9
Our Impact	11
Marketing Insights	12
Accredited Programs	13
Student Stories	16
Programs & Events	17
Community Report	21
Short Course Program Report	23
Childcare Report	25
Staff List	27
Committee of Management	27
Teachers	28
Volunteers	28
Funders, Supporters & Partners	29





# ABOUT YARRAVILLE COMMUNITY CENTRE (YCC)

Yarraville Community Centre (YCC) plays a central role in supporting connection, learning, and wellbeing across the City of Maribyrnong. As a trusted community hub, YCC delivers a diverse range of programs and services that respond to the evolving needs of our local community.

Established in 1975, YCC has a long history of strengthening community connection in Melbourne's inner west. Through a combination of government funding, partnerships, and community support, YCC continues to deliver high quality, responsive programs. This work is made possible by the dedication of our skilled staff and committed volunteers, whose efforts create meaningful opportunities for people to connect, learn, and feel supported.

Each week, YCC engages with more than 3,000 people, providing inclusive and accessible opportunities that support participation across all life stages. Our programs encompass education, childcare, vocational training, short courses, and digital literacy, complimented by the provision of affordable spaces for community groups and private functions.

YCC also delivers essential community services that promote equity and social inclusion. These include food relief services, community programs, and targeted initiatives supporting vulnerable communities. These services are underpinned by a commitment to dignity, access, and community-led responses.

# STRATEGIC DIRECTION

## VISION

To build a stronger community through connection, engagement, diversity, and opportunity.

## MISSION

YCC will be responsive to community needs and provide opportunities that build resilience and community connections.

## OBJECTIVES

We deliver on our vision and mission through the following objectives:

- Strengthen community capacity, cohesion, social connection, and foster wellbeing
- Maintain and grow a robust and sustainable organisation
- Provide families with access to quality childcare and children's services
- Provide access, opportunity, and support for people to develop their education and training goals

# CORE VALUES



### Integrity

We do things the right way, acting honestly and ethically at all times.



### Sustainability

We are committed to a more sustainable future for our inner west community and our planet.



### Innovation

We respond to the needs of our community and find better ways to provide relevant and inspired services.



### Inclusiveness

We know that working together as a team means we achieve better outcomes for our community.



### Quality

We strive for excellence and celebrate our successes.



### Community

We are fully focused on the community in all we do.

# CEO'S REPORT

Jessie Deane



2025 marked my first full calendar year as CEO of Yarraville Community Centre, following my commencement in October 2024. The year was focused on strengthening organisational foundations and positioning YCC for long-term sustainability, impact, and continued service to the community.

An early priority in 2025 was strengthening governance arrangements. I led the renewal and curation of the Board, establishing a skills-based structure supported by a living skills matrix. This approach was designed to ensure the Board brings a broad and complementary range of expertise to its role and has provided a strong foundation for the organisational improvement initiatives progressed throughout the year.

With the Board's oversight and support, YCC advanced several significant organisational initiatives in 2025. These included a substantial upgrade of IT systems to strengthen organisational capability and enable future blended and online learning delivery. The organisation also successfully completed the Right Fit for Risk compliance process and achieved RTO re-registration

through to 2030, reflecting the collective effort, diligence, and professionalism of the team.

Throughout the year, we undertook an organisation wide policy review, standardised staff contracts and employment structures, and improved clarity across governance and operational processes. Strategic planning commenced in 2025, with substantial groundwork laid to inform the development of a new Strategic Plan to guide YCC's next phase from 2026 onwards. Similarly, planning and initial design work for the redevelopment of YCC's website began in 2025, with implementation scheduled to progress in 2026 to enhance accessibility for the community and operational efficiency for staff.

Alongside this essential organisational work, YCC continued to deliver impactful community programs throughout 2025, including Chatty Cafés, Soup Days, strengthened food relief initiatives (including the OzHarvest partnership), United in Play, and Digital Sisters. Activation of the Blackwood Street site transformed an underutilised space into a growing community asset, while student placements contributed

meaningfully to operational and community projects, including the food pantry.

## Facilities Renovation

In 2024/2025, Yarraville Community Centre received funding through the West Gate Neighbourhood Fund – Active Community Grants program. This funding enabled much needed upgrades to kitchen facilities, supporting the growing demand for food relief and increased community access. Funding also supported the purchase of new audiovisual equipment, enhancing classrooms and meeting spaces used for adult learning and community programs.

This progress has been made possible through the commitment, care, and professionalism of YCC's staff, tutors, and volunteers. I am deeply grateful for their dedication and proud of what we achieved together in 2025. I also extend my sincere thanks to the Board for their unwavering support and expertise, which have been instrumental in guiding our direction and strengthening our organisation. With stronger systems, sound governance, and solid groundwork laid for future planning, YCC enters the year ahead well positioned to continue growing its impact and service to the community.



# CHAIR'S REPORT

Annie Delaney

It's been a huge year at YCC. The organisation is well placed to provide the best possible services, training and connection with the community through its attention to governance, compliance, and strong organisational procedures.

We have successfully onboarded new board members that has contributed to stable governance and renewed strategic direction. The achievement of being re-registered as a Registered Training Organisation through to 2030 reflects the high standard of organisational and compliance milestones that have been attained.

The investment in a significant upgrade of the IT systems has been completed to strengthen the capability and transition toward online learning delivery.

The success of accomplishing the "Right fit for Risk" compliance, alongside a comprehensive governance overhaul and implementation of strengthened organisational processes.

The organisation wide policy review, standardisation of staff contracts and employment structures and the stabilisation of financial management systems provide a strong foundation for our organisation's sustainability and future growth.

Delivery and engagement in impactful community programs, events and initiatives is an important part of the day-to-day work.

On behalf of the Board, I extend my sincere thanks to our remarkable staff, led by CEO Jessie Deane, whose leadership, dedication, and professionalism underpin YCC's success. Our wonderful teachers and tutors deliver impactful training and fun and engaging courses that make a difference to many people's lives. Volunteers are key to making our community organisation able to deliver more.

The opportunities for engagement, support and partnerships could not be stronger. The foundation of strong organisation processes in place and commitment to the community in the inner west make this all possible.



# TREASURER'S REPORT

Shaun Fagan ACMA

I am happy to report that the Yarraville Community Centre (YCC) continues to be in a sound financial position. The audit report has been prepared by Collins & Co Audit Pty Ltd who have expressed the opinion that the report presents a true and fair view of the financial position of YCC as at 31 December 2025.

For the year, YCC reported a total income of \$3,301,806, generated through a combination of federal and state educational funding, grants, investment and interest income. Total expenses for the year amounted to \$3,331,333 largely in line with last year except for;

- the absence of the 2024 credit for employee entitlement provisions and
- an additional \$102,580 of depreciation expense due to a combination of the 2024 capital additions and a one-off increase due to the change of depreciation to a straight-line basis.

This resulted in a net deficit of \$29,527 which was offset by unrealised gains on managed funds of \$32,067 producing a total surplus of \$2,540. This outcome aligns closely to the 2025 budget forecast of a \$30,000 deficit.

Capital expenditure was \$49,125 with \$30,223 invested in new computing equipment and the remaining balance allocated to building works, reflecting our continued investment in YCC's future.

Over the year, the team dedicated significant effort to consolidating YCC's financial position. This included rationalising numerous term deposits and transferring balances from historically low-interest-bearing bank accounts to a low-risk investment fund whilst maintaining liquidity. I would like to acknowledge and thank the team for their tireless work to simplify and strengthen our financial management and reporting. These improvements have made financial trends far easier to understand and monitor.

In the coming year, we will remain focused on maintaining the strong financial position of the organisation whilst continuing to support our community members who rely on the wide range of services and programs provided by YCC. It has been a pleasure and a privilege to serve as the YCC Treasurer for the last year. I thank the Committee, and Risk Finance & Governance (RFG) subcommittee for their diligence and co-operation.

# FINANCIAL REPORTS

## YARRAVILLE COMMUNITY CENTRE INC.

### STATEMENT OF FINANCIAL PERFORMANCE FOR THE YEAR ENDED 31 DECEMBER 2025

	2025 \$	2024 \$
<b>REVENUE</b>		
Educational funding income	2,416,396	2,430,445
Other income	850,292	850,433
Interest received	35,118	33,803
<b>TOTAL REVENUE</b>	<b>3,301,806</b>	<b>3,314,681</b>
<b>EXPENDITURE</b>		
Advertising expenses	4,533	10,910
Audit fees	7,600	6,550
Depreciation expense	148,453	45,873
Employment expenses	2,535,633	2,423,024
Program expenses	91,620	47,757
Other expenses	543,494	589,710
<b>TOTAL EXPENDITURE</b>	<b>3,331,333</b>	<b>3,123,824</b>
<b>NET SURPLUS/(DEFICIT) ATTRIBUTABLE TO THE ASSOCIATION</b>	<b>(29,527)</b>	<b>190,857</b>

## YARRAVILLE COMMUNITY CENTRE INC.

### STATEMENT OF COMPREHENSIVE INCOME FOR THE YEAR ENDED 31 DECEMBER 2025

	2025 \$	2024 \$
<b>NET SURPLUS/(DEFICIT) ATTRIBUTABLE TO THE ASSOCIATION</b>	<b>(29,527)</b>	<b>190,857</b>
Other comprehensive income for the year		
Unrealised gain/ (loss) on managed funds	32,067	128,144
<b>Total comprehensive income for the year</b>	<b>2,540</b>	<b>319,001</b>
<b>TOTAL COMPREHENSIVE INCOME ATTRIBUTABLE TO THE ASSOCIATION</b>	<b>2,540</b>	<b>319,001</b>



Scan the QR code for a full breakdown of our Financial Reports

YARRAVILLE COMMUNITY CENTRE INC.  
BALANCE SHEET FOR THE YEAR ENDED 31 DECEMBER 2025

	2025 \$	2024 \$
<b>ASSETS</b>		
<b>CURRENT ASSETS</b>		
Cash and cash equivalents	218,863	303,032
Financial assets	1,095,637	1,203,420
Trade and other receivables	232,763	184,669
<b>TOTAL CURRENT ASSETS</b>	<u>1,547,263</u>	<u>1,691,121</u>
<b>NON CURRENT ASSETS</b>		
Property, plant and equipment	273,757	373,084
Investment in managed funds at market value	1,853,601	1,725,160
<b>TOTAL NON CURRENT ASSETS</b>	<u>2,127,358</u>	<u>2,098,244</u>
<b>TOTAL ASSETS</b>	<u>3,674,621</u>	<u>3,789,365</u>
<b>LIABILITIES</b>		
<b>CURRENT LIABILITIES</b>		
Trade and other payables	141,816	174,008
Income received in advance	21,412	127,460
Provisions	214,001	176,073
<b>TOTAL CURRENT LIABILITIES</b>	<u>377,229</u>	<u>477,541</u>
<b>NON-CURRENT LIABILITIES</b>		
Provisions	21,600	38,572
Lease Liability	-	-
<b>TOTAL NON-CURRENT LIABILITIES</b>	<u>21,600</u>	<u>38,572</u>
<b>TOTAL LIABILITIES</b>	398,829	516,113
<b>NET ASSETS</b>	3,275,792	3,273,252
<b>EQUITY</b>		
Accumulated funds	3,275,792	3,273,252
<b>TOTAL EQUITY</b>	<u>3,275,792</u>	<u>3,273,252</u>

# OUR IMPACT

## KEY STATISTICS & OUTCOMES

**14,112** Cooked Meals & desserts distributed

**60** referrals to agencies or services

**14** people received Tax Support

**13** student placements

**34,500** Kilograms of food

**5,190** hours of room hire provided to community groups and organisations

**65,000** paid staff hours

**473** Students Learning foundation English skills through the Skills First, AMEP and SEE programs

**58** Volunteers engaged, equating to **8440** Volunteer hours

**80%** of students who completed vocational courses gained employment

**108** pets received food

**108,000** people participated in centre activities

**37,520** Hours of Learn Local pre-accredited programs delivered

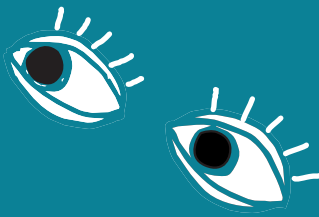
# MARKETING INSIGHTS

Yarraville Community Centre's online presence continues to play a vital role in connecting with the community. Through social media, website content,

and digital storytelling, YCC has strengthened engagement and highlighted the impact of its programs and participants.

---

## FACEBOOK & INSTAGRAM REACH 381,000 VIEWS

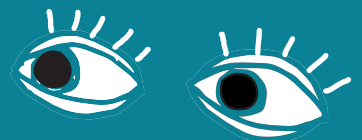
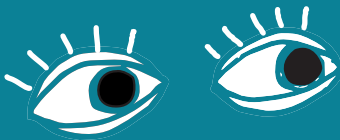


**Facebook followers**  
3,974 (+6.8%)

**Instagram followers**  
2,630 (+11.5%)

---

## WEBSITE PAGE VIEWS 116,222 (+1.8%)



**Website Visitors**  
28,766 (+5.3%)

# ACCREDITED PROGRAMS

## ENGLISH LANGUAGE (EAL)

YCC continued to deliver English language programs aligned with the accredited EAL curriculum, from Courses in Initial EAL through to Certificate III in EAL. Learners are able to progress flexibly throughout the year and are not required to complete one certificate before moving to the next level. Programs are delivered through state and federal funding arrangements.

## INNOVATIVE EAL LEARNING

A strong feature of YCC's EAL delivery is its innovative, place-based learning approach. Nicki Bowell, Trainer and Assessor in EAL, brings a creative and learner centred approach to English language development through the community garden at YCC's Blackwood Street Neighbourhood House. By combining gardening with language learning, students develop communication skills in a practical, relaxed, and immersive environment while growing, harvesting, cooking, and sharing food together.

As Nicki explains, "I feel like I'm more of a facilitator at the YCC Garden, not a teacher. The students look forward to going as it is a safe, relaxed and enjoyable environment. They have their roles, they communicate with each other about what to grow, what to pick and what to cook, and share the vegetables to take home."

This approach supports organic language development, confidence building, collaboration, and a strong sense of belonging.

Beyond the garden, EAL learners strengthen their English through excursions and community-based activities, applying language skills in everyday contexts and real life situations.



## PATHWAYS FROM AMEP TO VOCATIONAL STUDY

A significant number of learners transitioned from the Adult Migrant English Program (AMEP) and other foundation programs into vocational training. These learners successfully progressed into further education and achieved positive employment outcomes.

## WORKFORCE DEVELOPMENT AND TESOL PLACEMENTS

YCC is proud to support the Masters in TESOL program by providing high quality placement opportunities.

In 2025, five TESOL placement students completed placements within YCC's EAL programs, gaining hands-on experience alongside experienced teachers. Placement is viewed as a pathway into the workforce, and several former placement students have gone on to employment with YCC as Trainers and Assessors, strengthening the organisation's EAL workforce.

## EMPLOYMENT, COMMUNITY ENGAGEMENT AND SAFETY

EAL classes were supported throughout the year by a wide range of guest speakers, excursions and information sessions, focused on employment readiness, health, safety, and community participation.

Contributors included:

- Employment and volunteering programs delivered in partnership with community organisations
- Health education sessions covering stroke awareness, women's and men's health
- Legal education on workers' rights, housing, family and gender equity
- Financial literacy, online safety and scam awareness sessions
- Emergency and personal safety education, including fire safety, CPR, water safety and public transport safety
- Regular Centrelink information sessions supporting digital access and system navigation

## ADDITIONAL HIGHLIGHTS

YCC also hosted social work placement students, providing direct support to learners experiencing complex barriers including housing insecurity, health challenges, family violence, NDIS access issues, Centrelink, and visa concerns.

Together, these initiatives supported learners to build language skills, confidence, independence, and pathways to further education, employment, and community connection.

## VOCATIONAL EDUCATION AND TRAINING PROGRAM

Throughout the year, the following vocational qualifications were delivered:

- CHC32015 Certificate III in Community Services
- CHC30221 Certificate III in School Based Education Support
- CHC33021 Certificate III in Individual Support (Ageing & Disability)

VET enrolments experienced strong growth in 2025, increasing by 26.56%.

## PRACTICAL PLACEMENT EXPERIENCE

All VET courses incorporated a structured practical placement component. Students completed placements across a range of industry settings, including aged care, home care, disability services, community service organisations, and primary and secondary schools.

Depending on the qualification, students undertook between 100 and 120 hours of placement. This provided valuable hands-on experience, enabling them to apply the knowledge and skills gained throughout their studies in real-world environments.

The following organisations supported YCC's vocational training programs:

Royal Freemasons aged care services Footscray  
Western Language School - Footscray  
Yarraville West Primary School  
Spotswood Primary School  
The Grange Dinjerra Primary School  
Footscray Primary School  
Cambridge Primary School

## PRE-ACCREDITED PROGRAMS

In 2025, YCC delivered 17 pre-accredited programs, including four new courses, with student enrolments increasing by 25 per cent compared to the previous year. In total, 461 learners participated in programs delivered across the year.

A highlight was the delivery of a pre-accredited hospitality program in partnership with the Australian Light Foundation. Delivered at the Yarraville site and supported by excursions to the Light Foundation's commercial kitchen, the program provided hands-on training in customer service, barista skills, and workplace health and safety, using industry-standard equipment.

The Pre-accredited team was also successful in securing grant funding to support learners with intellectual disabilities to undertake a cooking

program embedded within the Employment Options course. Participants received practical kitchen experience and information about paid and volunteer opportunities in the hospitality sector.

Innovative delivery continued through the Microbusiness for Makers program, which focused on textile products and supported learners to develop skills to run small creative enterprises using practical, low-cost production methods.

YCC partnered with Wyndham City Council and PRACE to deliver a pilot Green Spaces course, which will inform two new centrally developed courses in landscaping and horticulture in 2026. Participants gained practical skills including safe chemical handling, growing vegetables and herbs, and weed management.

In 2025, YCC also participated in the pilot of ACFE's Stronger By Design framework. Staff training and selected program delivery ensured YCC remained aligned with evolving ACFE expectations and best practice.

Strong partnerships with Braybrook, Maribyrnong and Maidstone Community Centres, McAuley Women's Services, and Tarneit Education Learning Centre supported expanded delivery across external sites. Programs included English conversation, digital literacy, computer skills, sewing, and jobseeker preparation.

All pre-accredited programs prioritise language, literacy and numeracy, digital skills, and employment readiness, with clear pathways to further education, community participation, or work.



# STUDENT STORIES



## **Maria Aurora Gonzalez Avila**

Maria Aurora Gonzalez Avila has completed the CHC33021 Certificate III in Individual Support (Ageing and Disability) at Yarraville Community Centre. Inspired by caring for her mother, Maria is excited to pursue a meaningful career supporting others in the care sector. Congratulations, Maria!



## **Elsa Hagos Gebremeskel**

Elsa arrived in Australia from Ethiopia in 2014 and has been building her skills through education at Yarraville Community Centre. After enrolling in the SEE program to strengthen her English, Elsa was also supported to join the Digital Sisters program, developing her digital literacy and confidence. These combined skills have helped Elsa secure employment at Myer, allowing her to work while continuing her studies two days per week.



## **Silvestar Mijic – AMEP Student Story**

Through the AMEP program, Silvestar has combined language learning with real-world experience by volunteering with the Western Bulldogs Community Foundation. Volunteering has given him regular opportunities to practise English and build confidence beyond the classroom. With a background in bookbinding and printing in Bosnia, Silvestar hopes to continue working in the printing industry in Australia, embracing new technologies and pathways into employment.

# PROGRAMS & EVENTS

## ADULT LEARNERS WEEK

This year marked the 30th anniversary of Adult Learners' Week, a national celebration recognising the importance of lifelong learning. Yarrville Community Centre joined the celebrations with AMEP and SEE students creating vibrant paper flowers to welcome Spring.



## CALD PLAY PROGRAM

To mark the end of another successful term of the CALD Play Program, three Yarrville Community Centre AMEP classes enjoyed a special excursion hosted by the Western Bulldogs Community Foundation to the Melbourne Cricket Ground (MCG). The visit included a guided stadium tour and exploration of the Members' Museum, offering students insight into Australia's sporting history, followed by a shared lunch that supported connection and cultural exchange.



## CARERS WEEK

YCC marked Carers Week with a relaxing terrarium workshop and morning tea, offering carers a chance to pause, connect, and feel acknowledged within a supportive community setting.

This program was funded by Carers Victoria.



## CHATTY CAFÉ

YCC's monthly Chatty Café brings community members together in a warm and welcoming setting to enjoy a cuppa and connect. From casual morning teas to cosy winter lunches, these gatherings foster conversation, reduce social isolation, and strengthen community connection.



## CHILDREN'S WEEK

YCC celebrated Children's Week with creative workshops that encouraged children to explore, imagine, and express themselves. Through hands-on activities including clay sculpture and paper wire creations, children transformed everyday materials into art, building confidence and connection through creativity.

This program was funded by Maribyrnong City Council.



## DIGITAL SISTERS

For the second year running, YCC delivered Digital Sisters, a digital literacy program designed for women from migrant and refugee backgrounds. The program introduced participants to core concepts in artificial intelligence while building practical digital skills to increase confidence in using everyday technology safely. Together, these programs reinforce our commitment to reducing digital exclusion and empowering women to navigate and participate confidently in an increasingly digital world.

This program was funded by Good Things Foundation Australia.

## GET ONLINE WEEK

As part of Get Online Week 2025, YCC's Digital Boost session brought learners together for an engaging introduction to apps and artificial intelligence. With a focus on practical tools for smartphones and tablets, the session empowered participants to explore digital solutions that support everyday tasks and improve confidence in using technology.

This program was funded by Good Things Foundation Australia.



## INTERNATIONAL WOMEN'S DAY

YCC and community members came together to celebrate International Women's Day with a relaxed morning tea and an inspiring guest presentation by Shelley Hosking from COTA Victoria. Shelley shared valuable insights from the Women Working Together program, offering practical guidance on identifying personal strengths and applying them with confidence when returning to the workforce.



# PROGRAMS & EVENTS

## UNITED IN PLAY

Yarraville Community Centre welcomed local families to United in Play 2025, a vibrant program of recreational and multi-sport activities designed to get children moving, trying new activities, and building confidence through play. Families were encouraged to stay involved throughout the sessions, supporting their children's participation and strengthening family connections through shared experiences.

This program was funded by Maribyrnong City Council.



## OZHARVEST

Yarraville Community Centre was pleased to host the OzHarvest NEST program on two occasions in 2025. This six week program provided adults with the opportunity to build confidence in healthy eating and budget-friendly cooking. Blending practical nutrition education with hands-on cooking sessions and shared meals, the program created a fun, inclusive, and supportive environment for participants to learn new skills and connect with others.



## LAW WEEK

Law Week provided an important opportunity for community members to learn how the legal system can support them in their everyday lives. As part of the week's events, Yarraville Community Centre hosted a seminar delivered by lawyer Jess Mourney and Managing Lawyer Rachel Athaire from WEstjustice. The session covered discrimination and sexual harassment, with a focus on understanding individual rights and protections within the workplace.



## V4U DAY

Victoria University's annual volunteering initiative brought staff and students together to support community projects across Melbourne's west. At YCC, volunteers made a real impact by planting fresh herb seedlings in our planter boxes and installing new shade cloth along the fence line.



## NEIGHBOURHOOD HOUSE WEEK

Yarrville Community Centre celebrated Neighbourhood House Week 2025 with a vibrant day of workshops, a shared community lunch, and plenty of opportunities to connect. The event brought together community members to learn new skills, enjoy the sunshine, and celebrate the welcoming spirit of the neighbourhood.

This year's theme, Ripples of Change, was a fitting reminder of the strength and impact of local communities, highlighting how small actions can lead to meaningful change. YCC is proud to be part of these ripples every day through its ongoing work with the community.



## MONEY MENTOR PROGRAM

Yarrville Community Centre hosted the Money Mentor Program, a series of financial literacy sessions delivered to AMEP and SEE students. The program covered key topics including superannuation, banking, income, credit, and available financial support resources, helping participants build knowledge, confidence, and skills to strengthen their financial future.



# COMMUNITY REPORT

## NOURISH & FOOD RELIEF

Yarraville Community Centre is proud to highlight the continued impact of the Nourish Project and our broader food relief services, supporting community members experiencing food insecurity.

In 2025, a dedicated team of volunteers, led by our long-term chef, prepared and delivered 10,933 nutritious meals and 3,179 desserts through the Nourish Project. Delivered in partnership with Duke Street Community House and Braybrook Maidstone Community House, the program reflects YCC's strong commitment to collaboration and community wellbeing.

Alongside Nourish, YCC operates a 24/7 food pantry located at the front of our Francis Street building. The pantry provides no-judgement access to essential food items, including fresh fruit and vegetables, bread, pantry staples, frozen meals, and community donated goods. Everyday essentials such as milk, cereal, pasta, rice, and canned foods helped many households manage rising living costs.

In total, 4,873 food parcels were distributed in 2025.

A survey of food relief recipients demonstrated strong outcomes:

- 94% of respondents expressed satisfaction with the service
- 88% reported feeling treated with respect when accessing support
- The majority highlighted the quality and freshness of food as a key strength

The success of both the Nourish Project and the food pantry is made possible through the generosity of Foodbank, local supermarkets, and community donors who consistently supply essential food items. We also extend thanks to ExxonMobil for their financial support.

At the heart of this work are our volunteers. Their dedication, care, and commitment make it possible for YCC to continue delivering accessible, dignified, and responsive food relief for our community.



## CONTAINER DEPOSIT SCHEME

YCC reached an important milestone in 2025 with the upgrade of its Reverse Vending Machine in November, making container recycling more accessible and efficient for the community. Nearly 150,000 kilograms of eligible containers were collected and diverted from landfill, with 82 per cent plastic and aluminium and 18 per cent glass, all recycled for reuse as feedstock in new containers.





## SHORT COURSE TUTORS

Amanda Lobo  
Andrew McDougall  
Angela Mamalis  
Antonio Skitarelic  
Ariel De Ramos Molina  
Berne Stanley Fleming  
Bridget Evans  
Carly Brown  
Dimitri Midas  
Gina Robertson  
Giuseppe Rubino  
Hazel Kay  
Ilona Herreiner  
Jennie Swain  
Kate Ngo  
Kim Hoa Tram  
Laura Sabini  
Linda Condon  
Liza Rose  
Lyn Richardson  
Mahsa Goodarzi  
Michael Slee  
Michelle Luehman  
Peter Hawes  
Peter Rogozik  
Rob Nansen  
Robert Pace  
Rosie Dawson  
Rual Cung Sang  
Seema Choubey  
Shinjita Roy  
Suzanne Giacometti-Kingston  
Tamara Higgins  
Therese Slee  
Thi Thai Do  
Tomomi Sekizawa  
Wendy Tonkin  
Zaneta Mok  
Zoe Squire

# SHORT COURSE PROGRAM REPORT

The Short Course Program continued to provide a broad range of accessible, engaging, and enjoyable learning opportunities for the community. In 2025, the program recorded 1,145 enrolments, representing a 4% increase on 2024. Course offerings were refined in response to participant feedback, ensuring programs remained relevant and responsive to community interests.

A total of 159 courses were delivered, marking a 14% increase on the previous year. This growth highlights the ongoing demand for affordable, diverse learning opportunities within the Yarraville community and reflects YCC's strong delivery and engagement.

## INNOVATIONS:

### NEW AND FREE PROGRAMS

In 2025, YCC expanded its free program offerings, introducing several new options designed to reduce barriers to participation, including:

- Art Club
- Hand Brake Turn – Mobile (delivered in collaboration with Concern Australia)
- Tai Chi – Beginners

Free programs, including the NEST (Nutrition Education Skills Training) Program delivered in partnership with OzHarvest and the Real Estate Masterclass, attracted 150 enrolments across the year - more than double the participation recorded in 2024. This growth demonstrates strong community interest in low-barrier learning opportunities and reinforces the value of YCC's collaborative partnerships.

### NEW CLASSES

The program introduced 40 new classes, contributing to a refreshed and engaging course selection. Popular additions included sewing for beginners, expanded cooking classes, and a range of craft-based workshops, all of which were well received by participants.

### LOOKING AHEAD

Overall, the Short Course Program demonstrated resilience, growth, and strong community engagement. These outcomes highlight the community's continued enthusiasm for learning, skill-building, and social connection. YCC remains committed to strengthening partnerships, expanding program offerings, and responding to the evolving needs of its diverse community in the year ahead.



## CHILDCARE STAFF

### Childcare Coordinator

Sarah Haxby

### Childcare Educator

Shyamalie Arachchige

### Childcare Educator

Hanea Hurray

### Childcare Educator

Deborah Formosa

### Childcare Educator

Gemila Esmail

### Childcare Educator

Pribisha Rajbhandari

# CHILDCARE REPORT

Over the reporting period, the service continued to operate in a stable and consistent manner. Staffing levels remained stable throughout the year, supporting continuity of care and fostering strong, trusting relationships between educators, children, and families.

Enrolment numbers remained steady across the year, reflecting sustained demand for the service despite ongoing challenges across the early childhood sector.

## REGULATORY & ADMINISTRATIVE MATTERS

The service successfully submitted its Child Care Subsidy (CCS) application in September, ensuring ongoing compliance with funding and regulatory requirements. This supported families' continued access to fee assistance and contributed to the service's financial and operational stability.

## ENROLMENT TRENDS & DEMOGRAPHICS

Children under three years of age continued to represent the largest enrolment group, consistent with previous reporting periods. This ongoing trend highlights strong community demand for early education and care for infants and toddlers, reinforcing the importance of maintaining high-quality practice and environments for this age group.

## COMMUNITY ENGAGEMENT & REFERRALS

Word of mouth remained the primary source of new enrolments, underscoring positive family experiences and strong community trust. This reflects the service's established reputation within the local area and its ongoing commitment to quality, consistency, and responsive practice.



**KEEP OUR DOORS OPEN**

**STRONG  
COMMUNITIES  
START HERE**



## STAFF LIST

### CEO

Jessie Deane

### Operations Manager

Patricia Saca & Elena Ashley

### Education Manager

Melissa Giffard & Karishma Karki

### Short courses Coordinator

Miyoko Wheeler

### Foundation Coordinator

Heather Naylor

### AMEP Assessor/Teacher /Administrator

Dora Serpanos

### SEE Assessor/Teacher/Administrator

Ana Ibanez

### Pre Accredited Coordinator

Nicola Innes

### SEE Administration/ Pre-accredited Data Entry

Cam Truong

### Skills First Data Entry/ Compliance Officer

Evangeline Pineda

### AMEP Pathway Counsellor/ Administration

Uyen Nguyen

### AMEP Student Administration

Angela Barbosa

### Administration Officer

Susan Stojanova

### Administration Officer

Lucy Hall & Rory Shannon

### Finance Officer

Bhavna Joshi, Cathy Byrnes  
& Hannah Nguyen

### Community Development Coordinator

Tania Jorquera / Mary Blaquiere

### Marketing and Communications Coordinator

Mary Blaquiere

### Nourish Chef

Christine MacKeness

## COMMITTEE OF MANAGEMENT (COM) MEMBERS

### Chair

Andrew Ellis (resigned May 2025)  
Annie Delaney (appointed May 2025)

### Treasurer

Christine Dixon (resigned May 2025)  
Shaun Fagan (appointed May 2025)

### Vice Chair

Inge Grunig (resigned May 2025)  
Suzette Sherazee (appointed May 2025)

### Secretary

Greta Haywood (resigned August 2025)  
Allison Crunden (appointed September 2025)

### CoM Member

Domenique Meyrick

### CoM Member

Kathryn Sutherland

### CoM Member

Lisel Thomas (Resigned July 2025)

### CoM Member

Shara Speight

## TEACHERS

Amir Abbasi  
Andrew Robertson  
Angela Bitaxis  
Anna Kolusniewski  
Bridie Mann  
Bronwyn Ritchie  
Christina Leslie  
Clare Watts  
Deb Magnusson  
Deepa Singh  
Despina Davatzis  
Dora Serpanos  
Fabian Barraza  
Faduma Gas  
Feroza Naleen Irfahan  
Geoff Marshall  
Hope Martin  
Jason Spear  
Jeremy O'Connor  
Jessica Griffiths  
Kelly West  
Kerry Brown  
Lil Fahey  
Liza Cagorski  
Liza Grace  
Melissa Britten  
Mohamud Batun Salad  
Nicki Howell  
Ravneet Kaur  
Ross Beale  
Stephen Pollard  
Tamara Ramljak  
Tram Le  
Yingxi Yu

## DIGITAL SISTERS

Ana Diago  
Anisha Prajapati  
Kanagalaksmi Harshwardhan  
Saumya Monga  
Yovana Mercy

## THANK YOU TO ALL OUR VOLUNTEERS

Adrienne Inglese  
Ana Ines Diago De La Rosa  
Andrew Rusker  
Annette Dulfer  
Barbara Coco  
Carlo Marasea  
Claire Toner  
Dalila & Elke Yorke  
Damian Clark  
David MacLeod  
David Tolo  
Diana Carolina Rodriguez  
Elena Xinjun Wu  
Emilce Ruiz Murillo  
Gert-Jan Roest  
Jessica Morton  
Kerrie Stephenson  
Kidest Belet  
Liling Huang  
Mary Orlanda  
Michelle Buck  
Niall McCarthy  
Riley Martin  
Sam Daniel  
Sene Chang  
Sonali Rosa  
Thi Loan Anh  
Thi Thanh Phuong Nguyen  
Tom Grey  
Valerie (Val) Adams  
Virginia Fan  
Van Truong  
Yoonjung Kim  
Sue Manski  
Susan (Sue) Thomas  
Suvidha Khatri  
Zachary Shapiro  
Bettina Twyman  
Bridget Evans  
Peter Rogozik  
Stephanie Heaney  
Thi Thai Do

## FUNDERS, SUPPORTERS & PARTNERS

ACEVIC  
Adult Learning Australia  
Adult, Community and Further Education  
ALDI Wyndham  
ALFA CAFE  
AMES Australia Employment  
Angliss Neighbourhood House  
APM- Parents Next  
Asylum Seeker Resource Centre  
Australian Government's Department of  
Employment and Workplace Relations  
Australian Government's Department  
of Home Affairs  
Bakers Delight Yarraville  
Bendigo Bank Seddon  
Bradmill Yarraville - Frasers Property  
Group  
Braybrook Community Centre  
Bunnings West Footscray  
Candied Bakery  
Carers Victoria  
City of Maribyrnong  
City of Maribyrnong's My Smart Garden  
Climate Action Maribyrnong  
Cobb Lane  
CoHealth  
Coles  
Community+  
COTA Victoria  
Department of Family, Fairness and  
Housing  
Department of Premier and Cabinet  
Djerriwarrh Community and Education  
Services  
Duke St Community House  
Exxon Mobil  
Farnham St Neighbourhood House  
Foodbank Victoria  
Footscray Library  
Foundation House  
Katie Hall Footscray Legislative Assembly  
Australian Labour Party  
Learning for Employment  
Maidstone Community Centre  
Maribyrnong City Council  
Maribyrnong Community Centre  
McAuley's Women's Centre  
Neighbourhood Houses Victoria  
Network West  
Oz Harvest  
Pets of the Homeless  
PRACE  
RecWest  
Services Australia  
Sugar Australia  
The Good Things Foundation –  
Be Connected  
The Hon. Melissa Horne, Member for  
Williamstown  
The Hon. Tim Watts MP, Member for  
Gellibrand  
Victoria Law Foundation  
Victorian Government's Department of  
Education and Training  
Western Bulldogs Community Foundation  
Western English Language School  
Western Private Hospital  
Williamstown Community and Education  
Centre  
Wise Employment  
WEstjustice  
Workforce Australia  
Wyndham Community and Education  
Centre



← LIFT  
← LOUNGE AREA  
← MULTIPURPOSE ROOM



Art Room

**Yarraville Community Centre**

59 Francis Street Yarraville

114 Blackwood Street Yarraville

9 Victoria Street Footscray

**Phone** 03 9687 1560

**Email** [info@ycc.net.au](mailto:info@ycc.net.au)

